

LIGHTspeed Optic Fibre Sliding Patch Panel

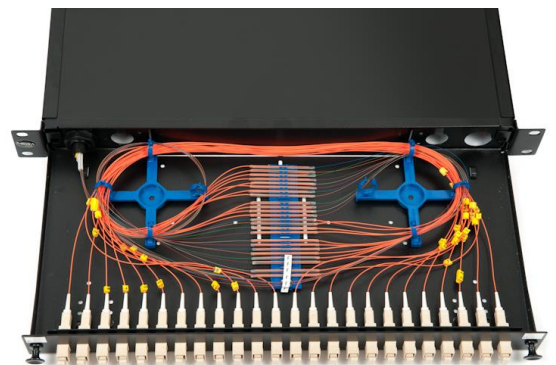
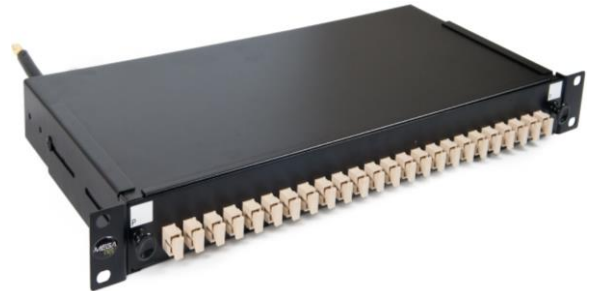
This is a 19" rack mountable optical fibre sliding panel for indoor use.

They are designed for voice, video and data applications including 10 GB Ethernet.

These patch panels are therefore ideal for future proof solutions particularly in rapidly evolving backbone and desktop requirements.

Features

- ISO11801, TIA/EIA 568C & EN50173 compliant
- 1U, 19" rack mountable with a 200mm depth
- Back cover offers multiple entry/exit options
- Multiple adaptor faceplate options are available:
 - SC Simplex / LC Duplex
 - SC Duplex / LC Quad
 - ST Simplex / FC
- 2nd Face Plate design facilitates
 - Recessed mounting of adaptors
 - Stable mounting of adaptors
 - More acceptable bending radius at patching field
- Adjustable rack mounting brackets
- Removable top plate
- Cable entry gland



(Standard unit sold without accessories)

Optional Accessories

- Cable management kit
- Splice cassette
- Pigtails
- Midcouplers/Adaptors
- Splice protectors
- Additional Glands

SC Duplex / LC Quad Sliding Panel – 12 / 24 port



ST Simplex / FC Simplex Sliding Panel - 24 port



SC Simplex / LC Duplex Sliding Panel – 12 / 24 port

