

## WIRESpeed CAT6A Accessories

WIRESpeed F Panel, Surface Mount Boxes and Flush Mount Termination Modules are designed to accommodate the WIRESpeed CAT6A keystone

### WIRESpeed F PANEL CAT6A 24 PORT V2 (empty)

#### Features

- 19" Rack Mountable
- 24 Port Shielded Patch Panel
- Cable organiser included
- Grounding screw design
- Label holder
- Cage nuts included
- Black



### WIRESpeed Brush Panels

#### Features

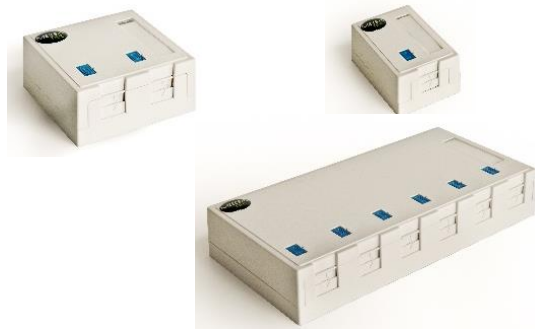
- 19" Rack Mountable
- Various sizes
  - 50 mm Brush
  - 50 mm Brush + Organiser
  - 250 mm Brush
- Black



### WIRESpeed Surface Mount Boxes

#### Features

- Various Empty Configurations
  - 1 Port
  - 2 Port
  - 6 Port
- Polycarbonate Housing
- Dual Shutter (Spring Loaded)
- Icon Tag
- Label Holder
- Fixing screws, tape and ties included
- Surface Mount Application
- White



## WIREspeed Flush Mount Termination Modules

|                                                        |                                                                                       |
|--------------------------------------------------------|---------------------------------------------------------------------------------------|
| <p>WIREspeed Module Collar (50 x 50mm)</p>             |    |
| <p>WIREspeed Module Angled + Shuttered (25 x 50mm)</p> |   |
| <p>WIREspeed Module Angled (25 x 50mm)</p>             |  |
| <p>WIREspeed Module Blank (25 x 50mm)</p>              |  |

V 2018-11